

Proposed development
Land behind Cambrian Arms, Builth Road, Powys



Existing corrugated buildings to be demolished



View of corrugated building



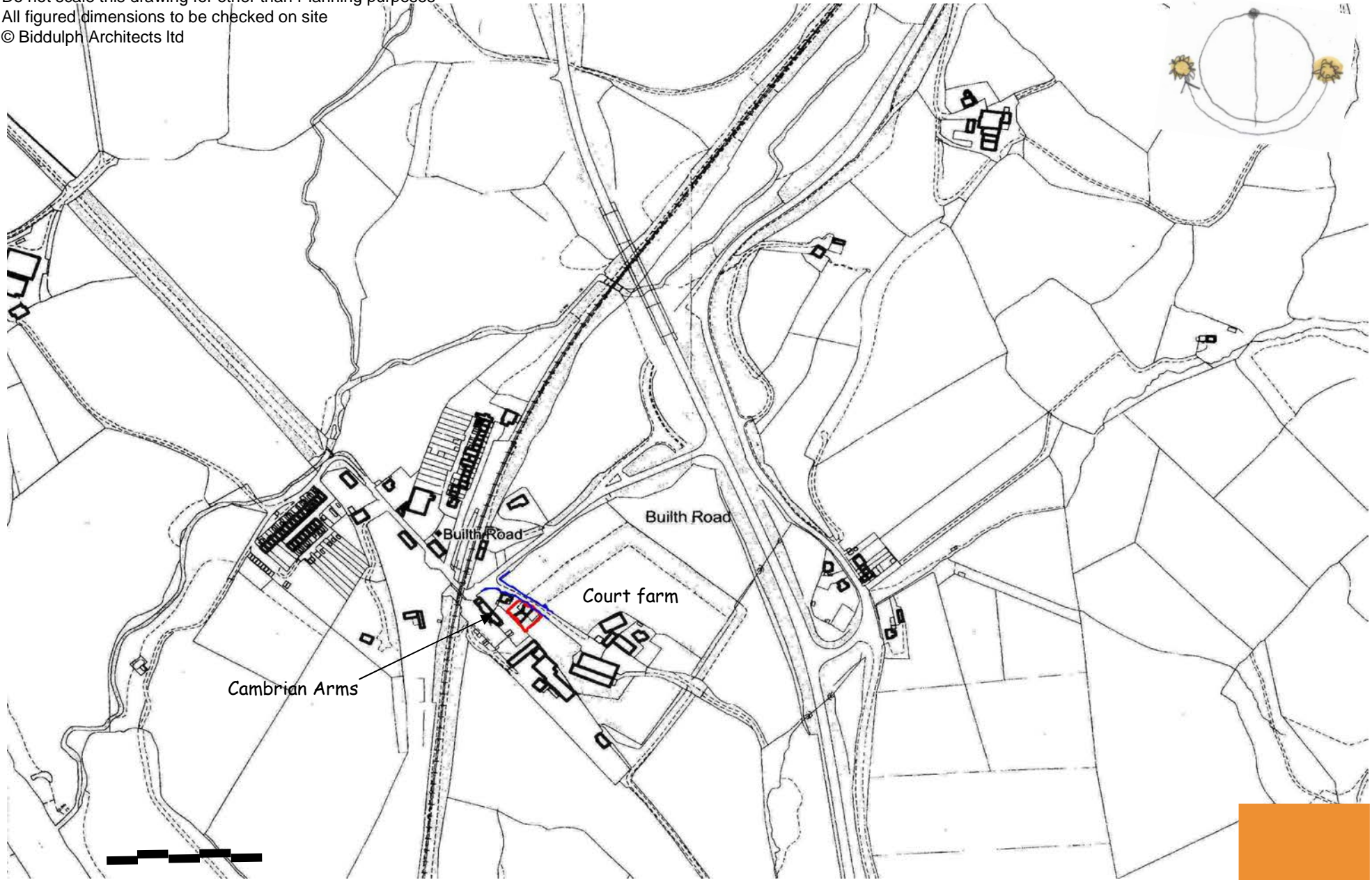
Cambrian Arms PH



View of approach inc adjoining house

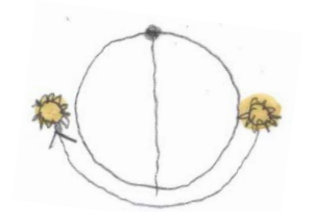
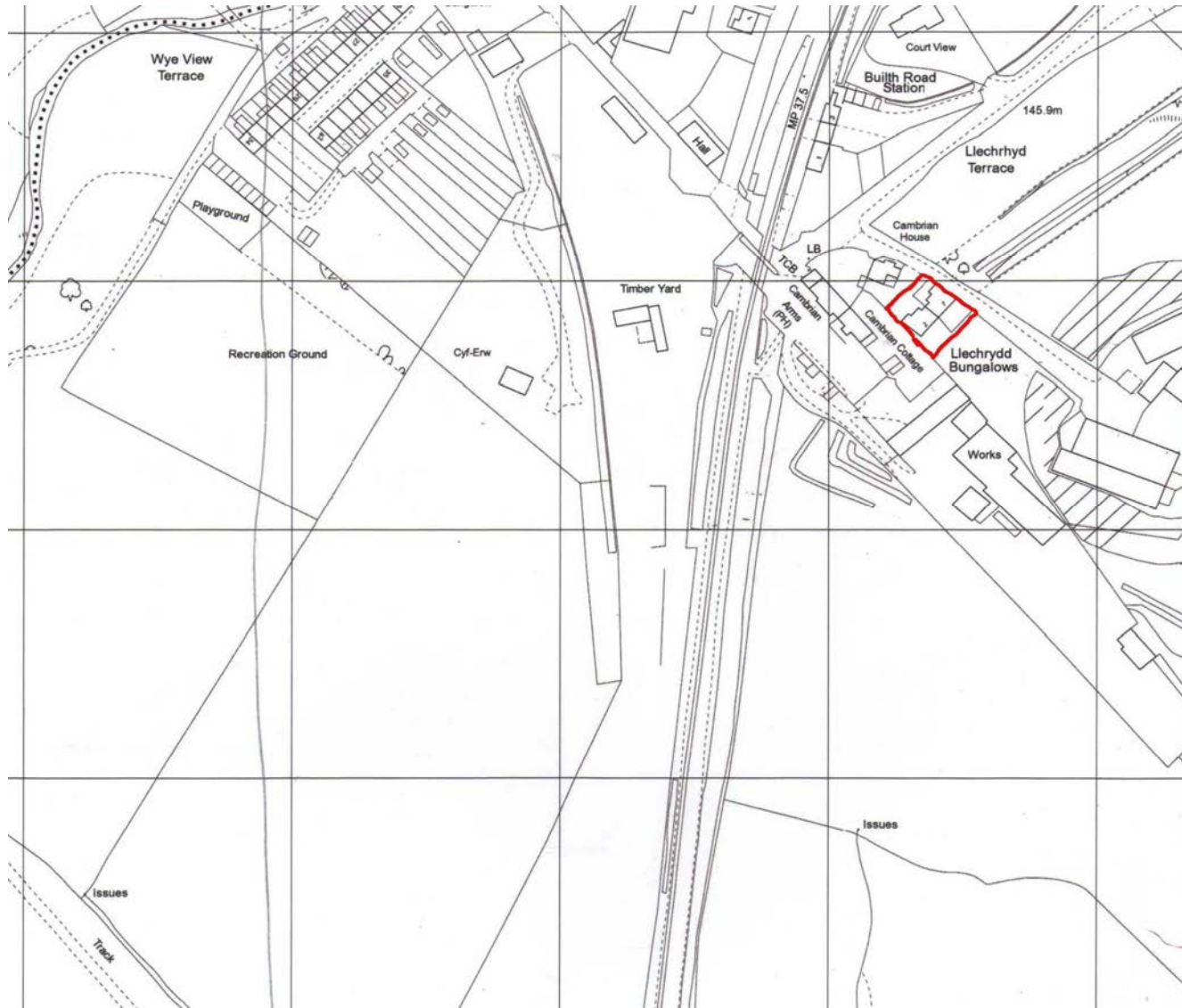
Site photos

Do not scale this drawing for other than Planning purposes
All figured dimensions to be checked on site
© Biddulph Architects Ltd



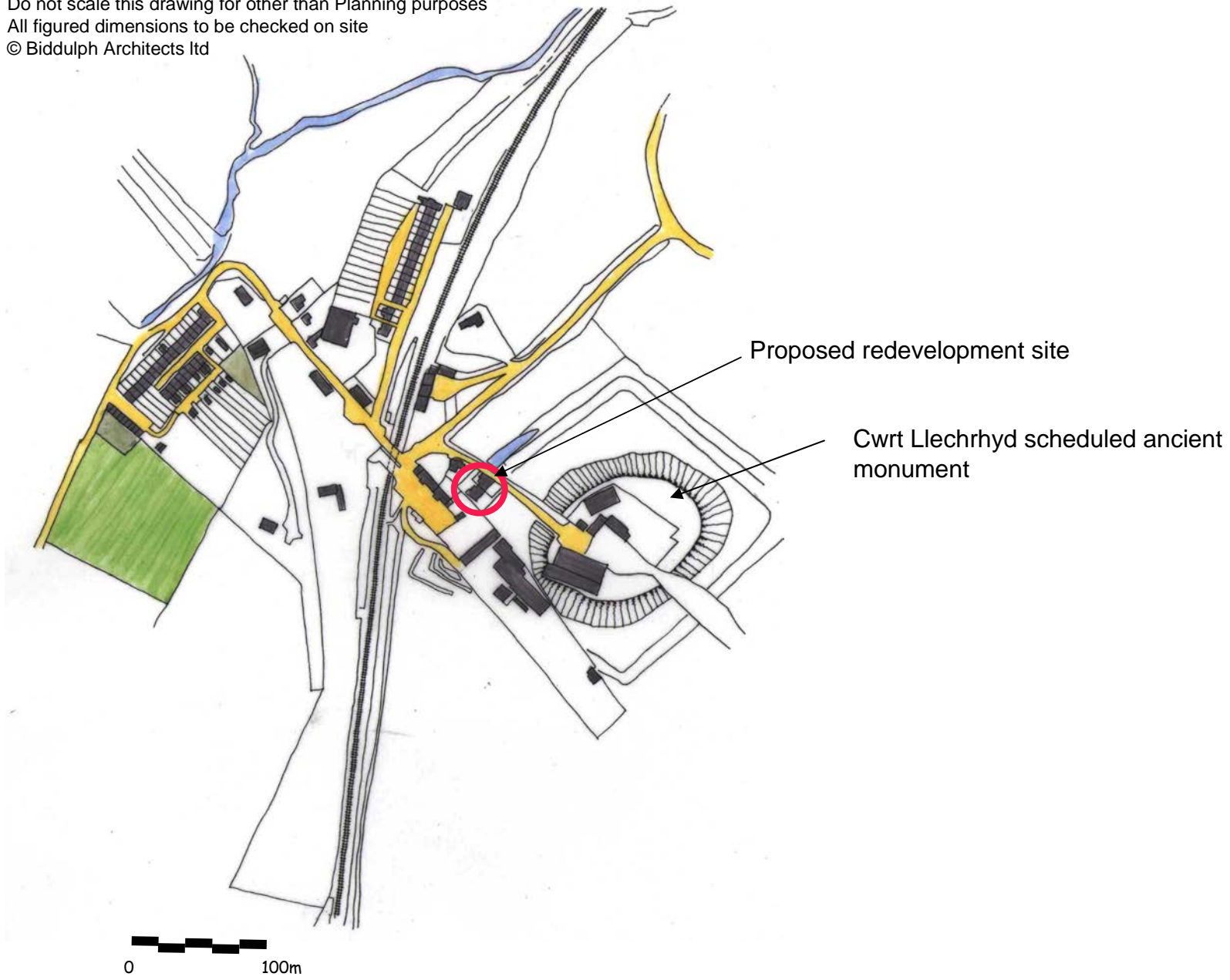
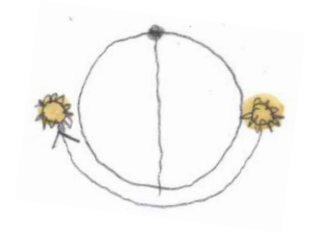
Sketch proposal, Land behind Cambrian Arms, Builth Road, Powys

Do not scale this drawing for other than Planning purposes
All figured dimensions to be checked on site
© Biddulph Architects Ltd



Sketch proposal, Land behind Cambrian Arms, Builth Road, Powys

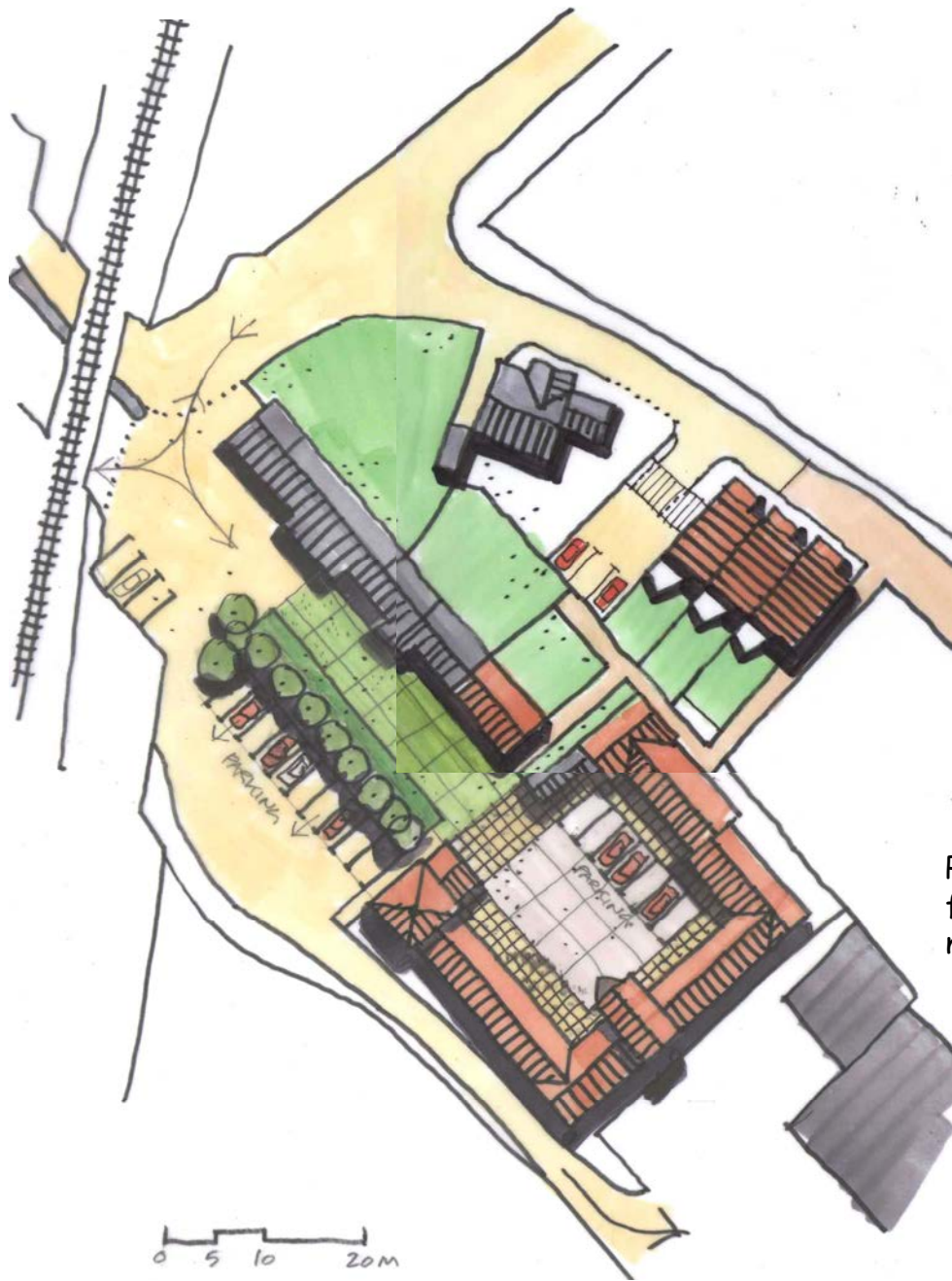
Do not scale this drawing for other than Planning purposes
All figured dimensions to be checked on site
© Biddulph Architects Ltd



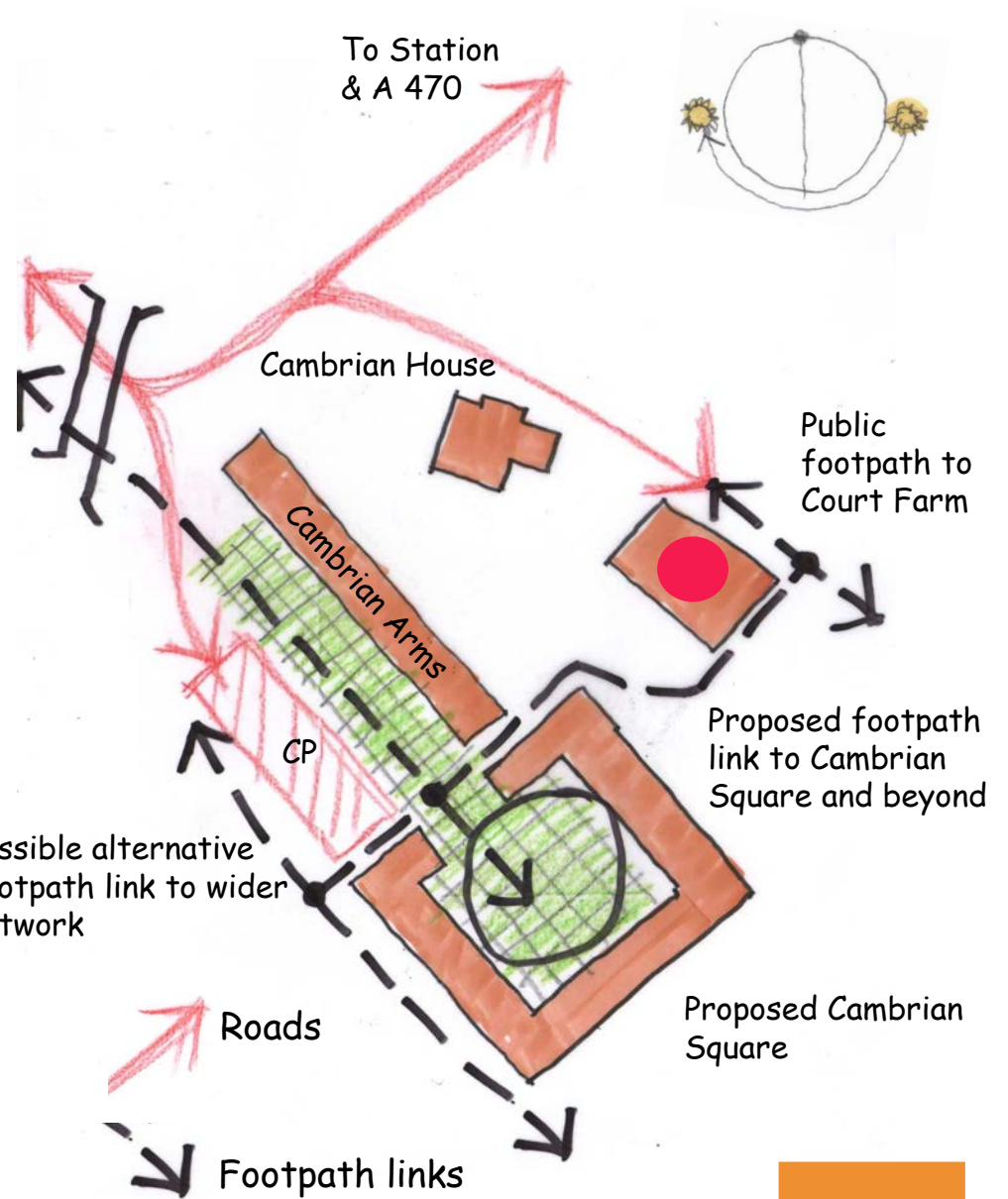
Sketch proposal, Land behind Cambrian Arms, Builth Road, Powys

Builth Road as existing



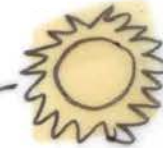
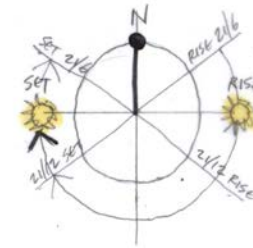
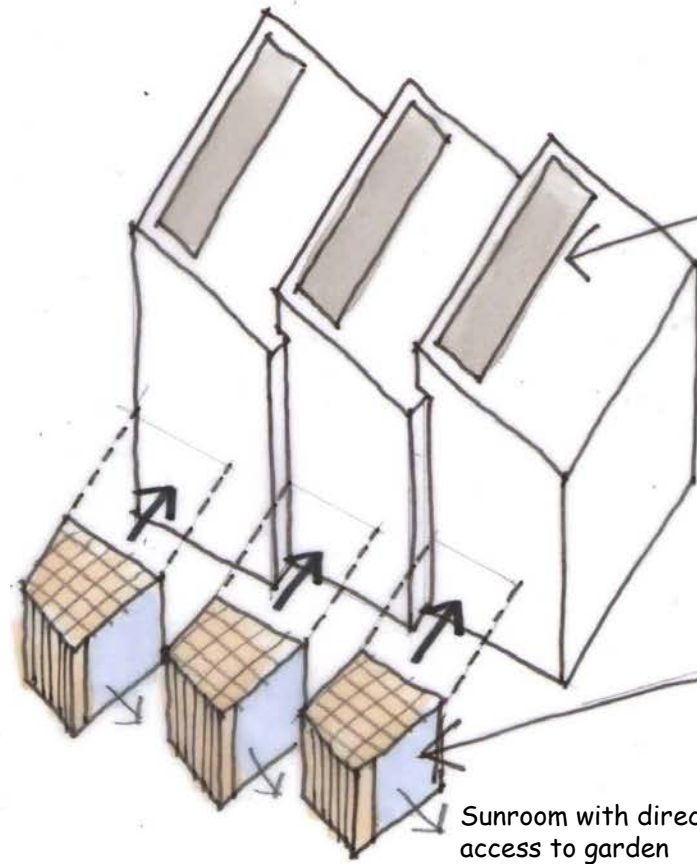
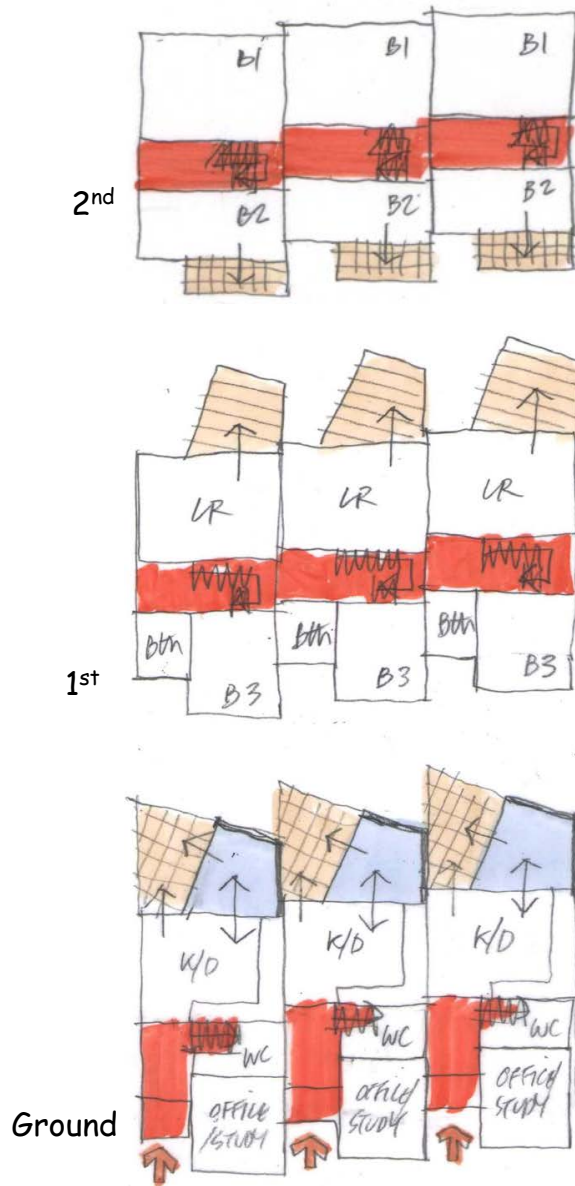


Sketch proposal, Land behind Cambrian Arms, Built Road



Proposed road and pedestrian links

Do not scale this drawing for other than Planning purposes
 All figured dimensions to be checked on site
 © Biddulph Architects Ltd



SE orientation
to roofs

Low Carbon Design Principles

- passive solar/PV panels to roof
- simple compact terraced footprint resulting in a low surface to volume ratio
- optimum southerly orientation to main habitable spaces to benefit from maximum daylight and solar gain
- highly insulated envelope. Fabric u-values 0.1 or better
- Welsh locally sourced timber frame and cladding
- summer/garden room to create buffer between kitchen/dining room and exterior

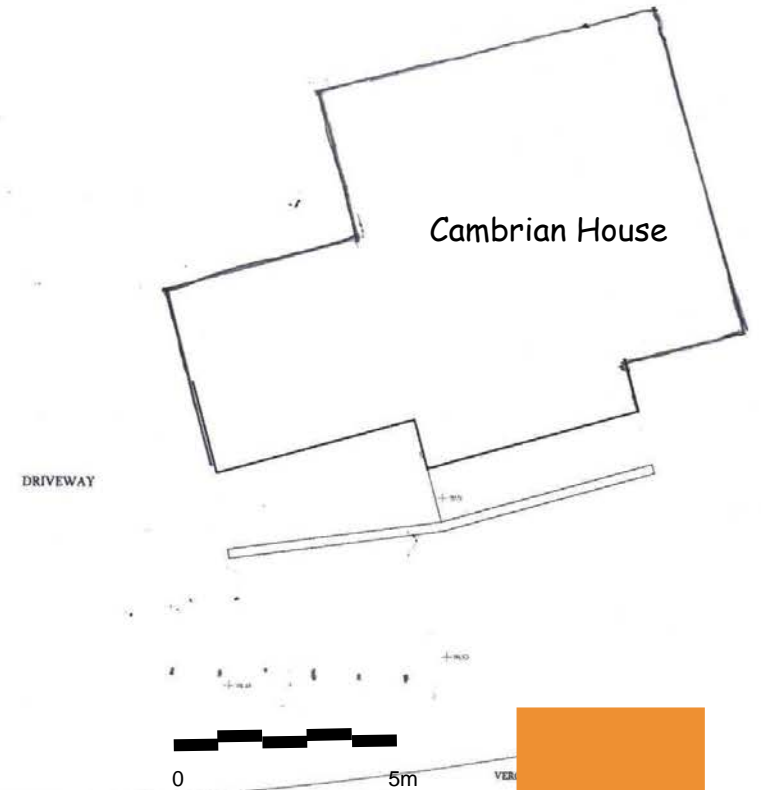
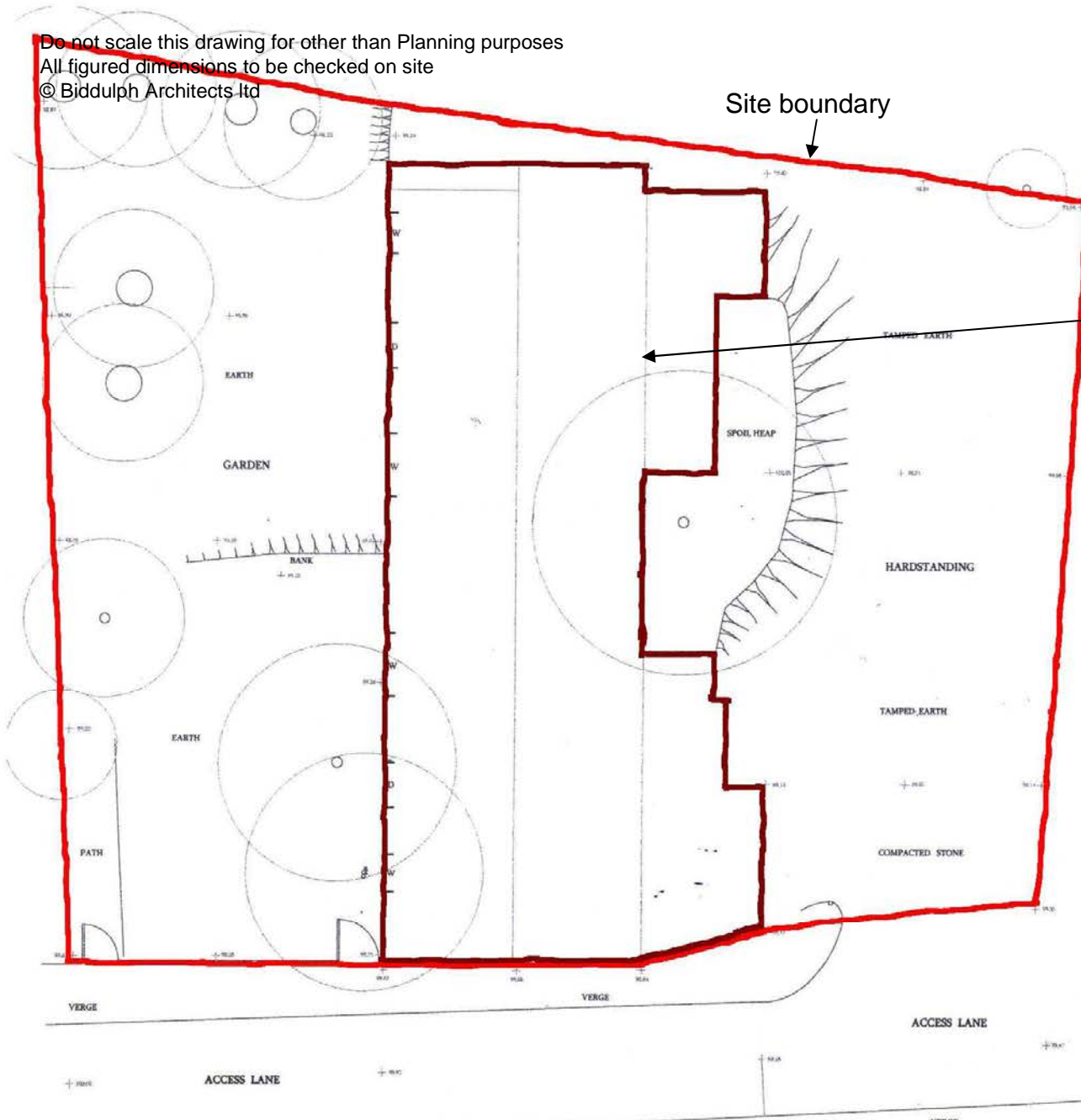
Sunroom with direct access to garden

Sketch proposal, Land behind Cambrian Arms, Builth Road, Powys

Do not scale this drawing for other than Planning purposes
All figured dimensions to be checked on site
© Biddulph Architects Ltd

Site boundary

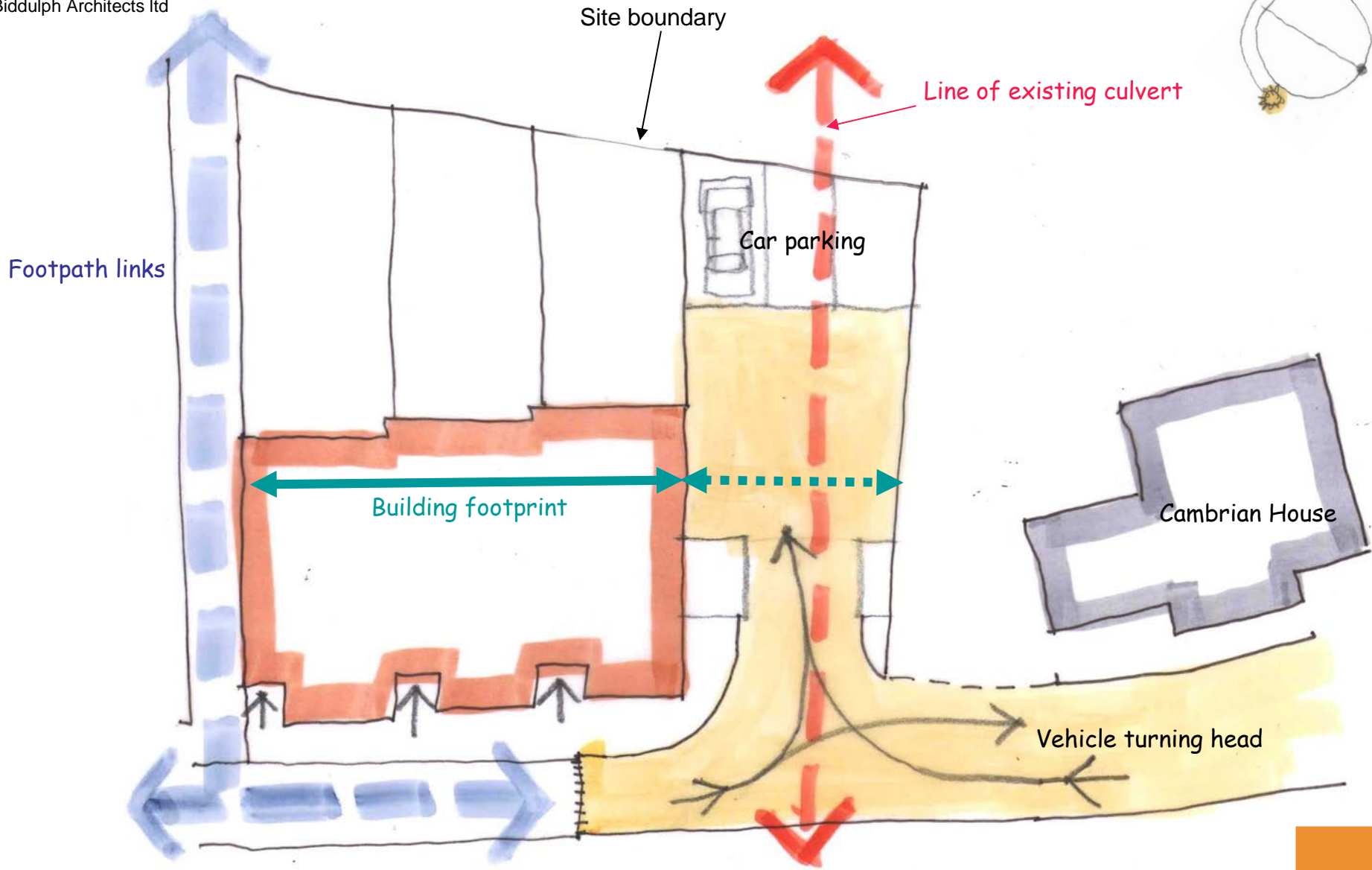
Existing buildings to be demolished



Sketch proposal, Land behind Cambrian Arms, Builth Road, Powys

Site as existing

Do not scale this drawing for other than Planning purposes
All figured dimensions to be checked on site
© Biddulph Architects Ltd

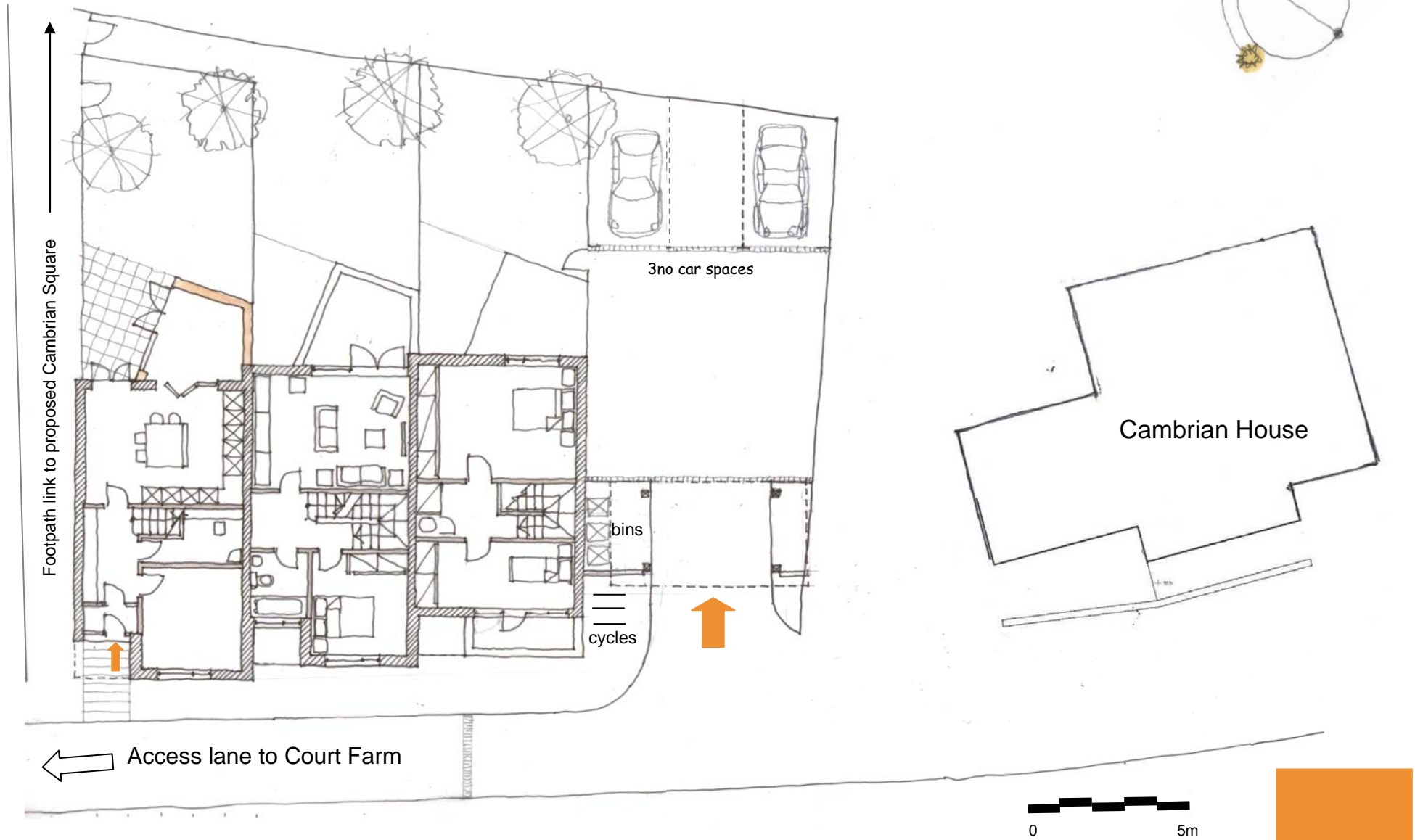


Sketch proposal, Land behind Cambrian Arms, Builth Road, Powys

Site concept

BIDDULPH
ARCHITECTS Ltd

Do not scale this drawing for other than Planning purposes
All figured dimensions to be checked on site
© Biddulph Architects Ltd

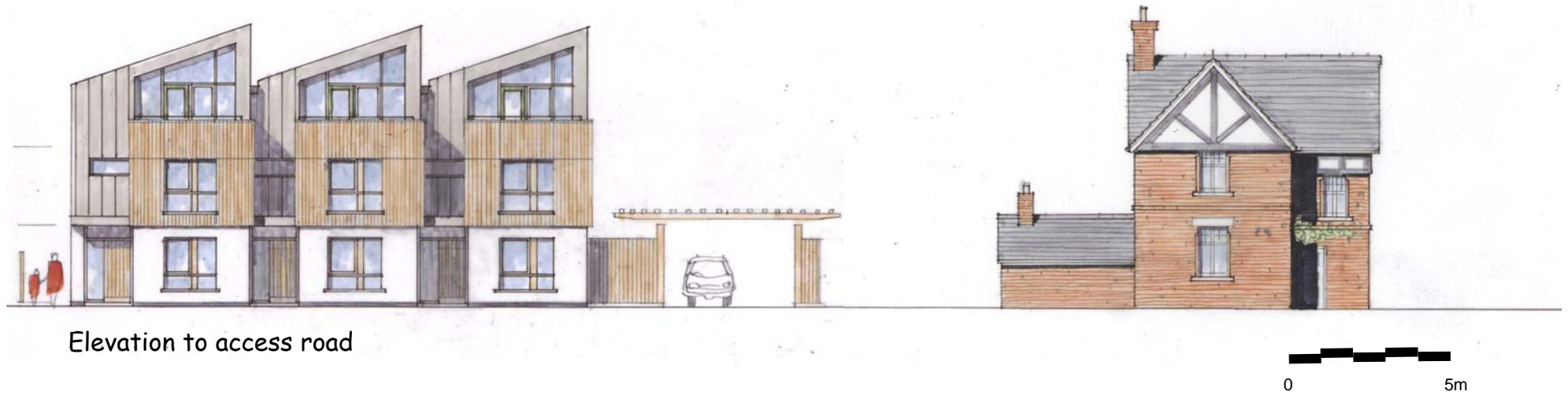


Sketch proposal, Land behind Cambrian Arms, Builth Road

Proposed site layout

BIDDULPH
ARCHITECTS Ltd

Do not scale this drawing for other than Planning purposes
All figured dimensions to be checked on site
© Biddulph Architects Ltd

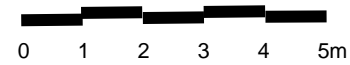
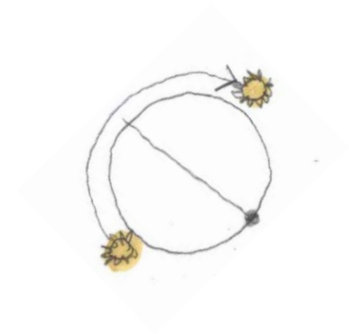
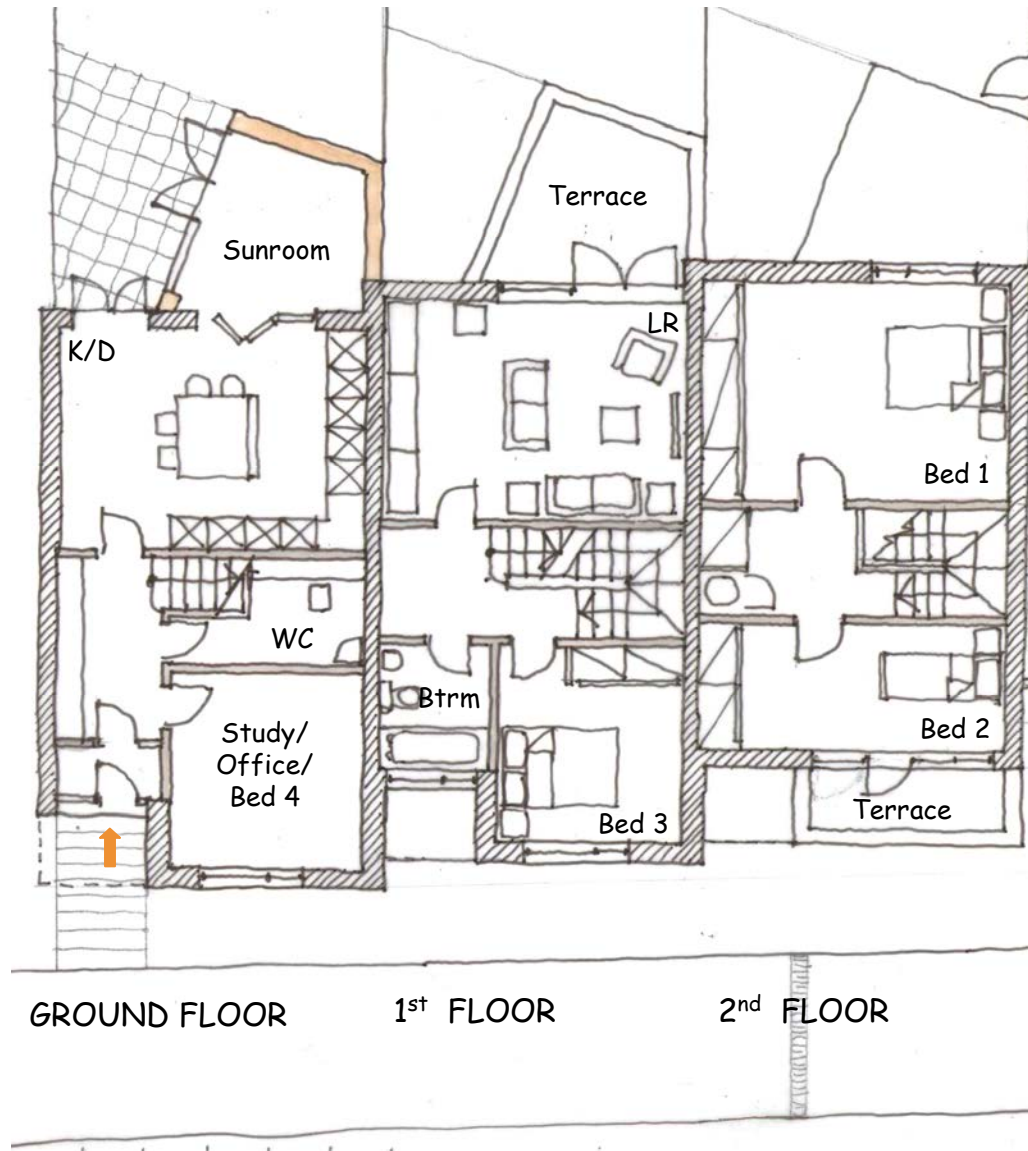


Elevation to access road

Sketch proposal, Land behind Cambrian Arms, Builth Road, Powys



Do not scale this drawing for other than Planning purposes
All figured dimensions to be checked on site
© Biddulph Architects Ltd

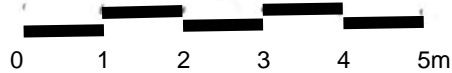


Sketch proposal, Land behind Cambrian Arms, Builth Road, Powys

Do not scale this drawing for other than Planning purposes
All figured dimensions to be checked on site
© Biddulph Architects Ltd



Elevation to access road



Sketch proposal, Land behind Cambrian Arms, Builth Road, Powys